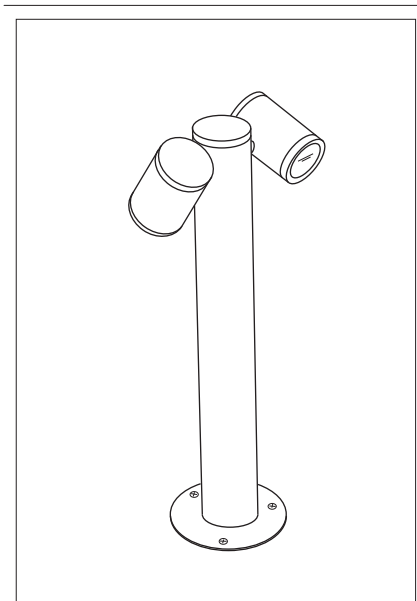
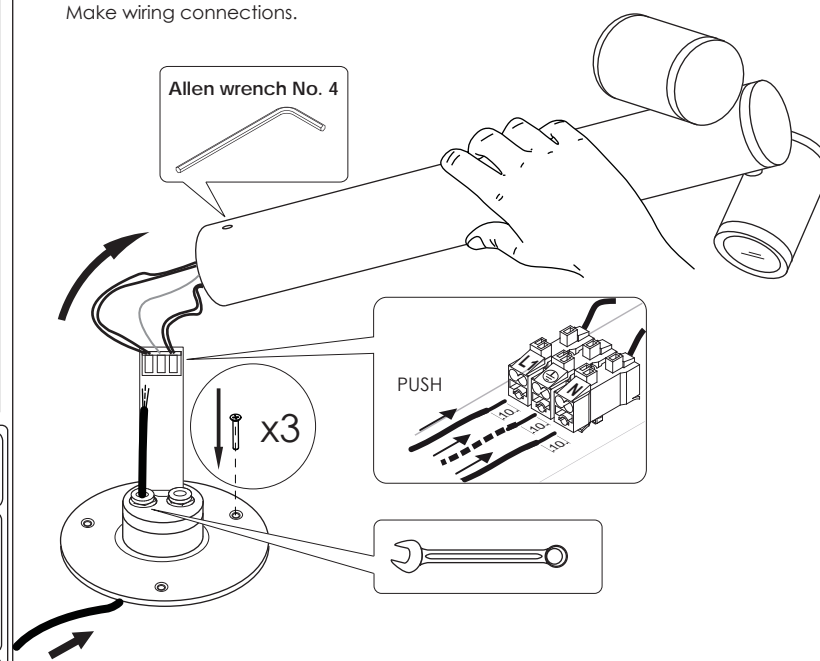


⊕ outdoor/



1 Installation

- Release allen screw and remove the upper part of the luminaire.
- Insert cable through the cable gland.
- Screw luminaire base on the ground with (3) screws.
- Make wiring connections.



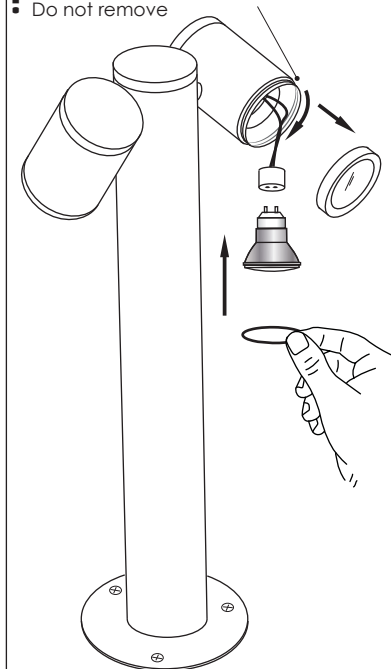
Useful tools

- Allen wrench No 4, No 2
- No 17
- (x3) Screws
- (x3) Screws

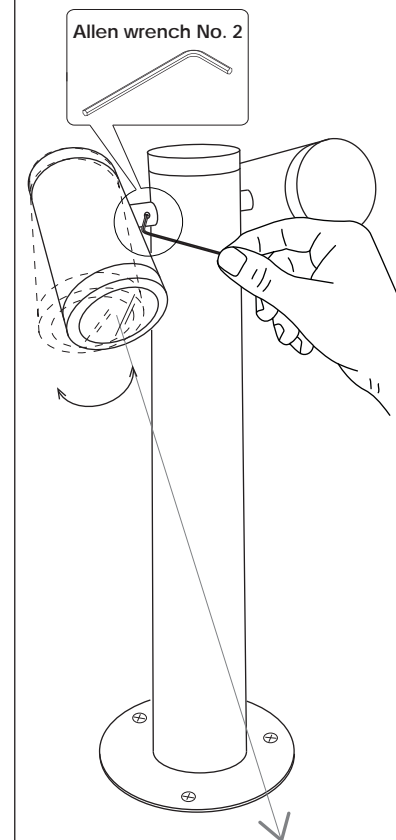
2 Install/ replace lamps

Remove the cap of the spots. Fit the lamps and secure with the spring.

- ! Please notice the silicone gasket.
- Do not remove



3 Adjust the spots and then fix with the allen wrench.



USER INSTRUCTIONS

- The installation of the unit must be done by a qualified electrician.
- The unit must be earthed in case an earth connecting point exists.
- Ensure that the mains is switched off during servicing.
- Ensure that after the installation, the unit is properly fixed and the cable clamps (if exist) are well tightened.
- Manufacturer will not accept liability for injury or damage resulting from incorrect use or installation
- The unit is not intended to operate in loop connection.
- Wall plugs and terminals are not included.
- LED modules are replaced only by the manufacturer.

CAUTION
Replace any cracked shield

