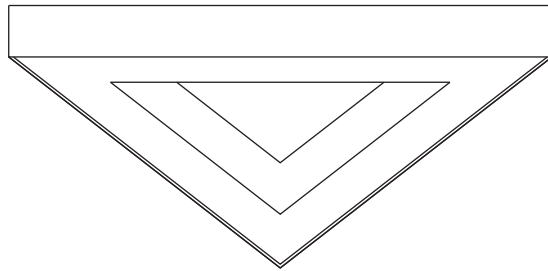
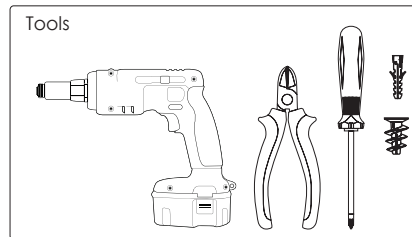


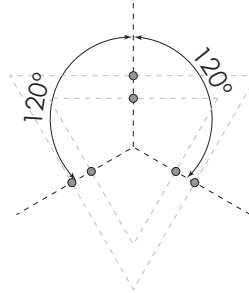
➔ indoor/ profiles



a: 600 | 800 | 1000

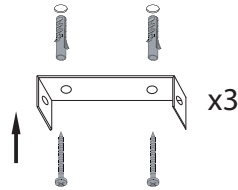


1 Make holes on ceiling.

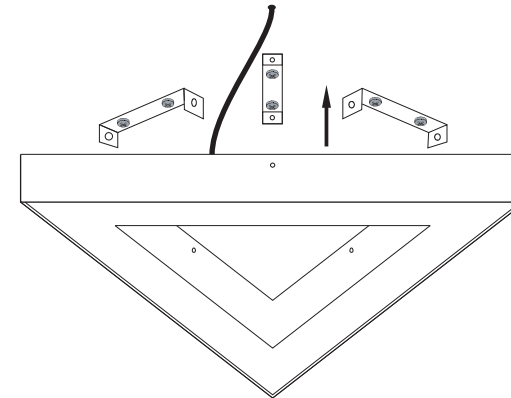
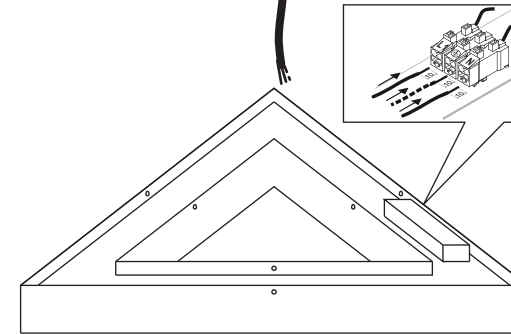


3 metal
strips

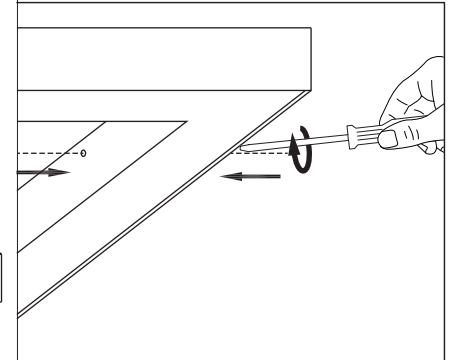
2 Screw on ceiling the metal stripes.



3 Make wiring connections



4 Fit the fixture on ceiling. Tighten the (6) screws.

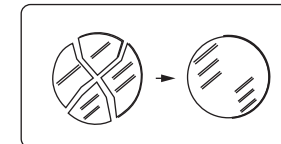


USER INSTRUCTIONS

- The installation of the unit must be done by a qualified electrician.
- The unit must be earthed in case an earth connecting point exists.
- Ensure that the mains is switched off during servicing.
- Do not use bulb(s) bigger than the indicated on units name-plate or packaging.
- Ensure that after the installation, the unit is properly fixed and the cable clamps (if exist) are well tightened.
- Manufacturer will not accept liability for injury or damage resulting from incorrect use or installation
- The unit is not intended to operate in loop connection.
- Wall plugs and terminals are not included.
- LED modules are replaced only by the manufacturer.

CAUTION

Replace any cracked shield.



CAUTION

Wear anti-static gloves
before you touch LED systems.

