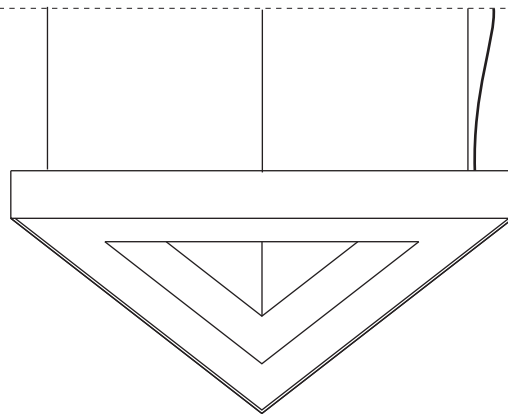
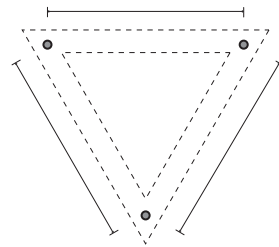


FUGA 2 R TRIANGLE SP

indoor/ profiles



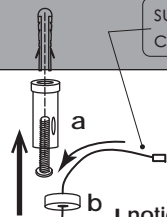
1 Measure and make holes on ceiling.



2

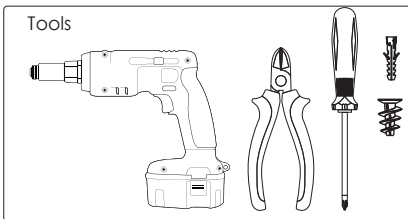
CEILING

suspension cable with stopper

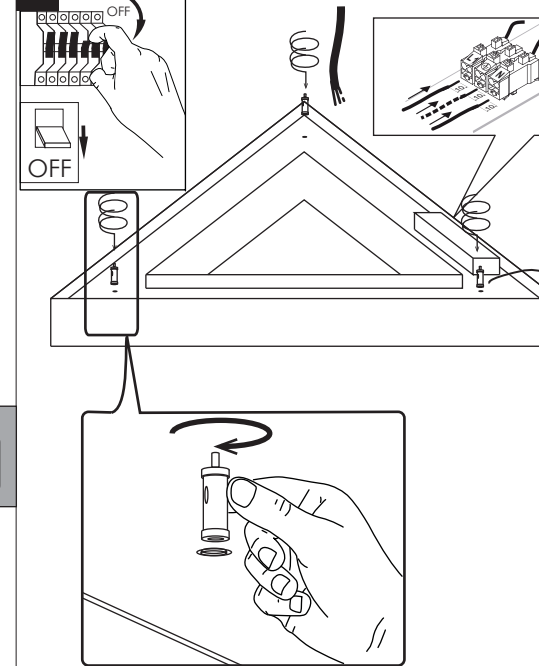


notice
pass the suspension cable through component b and then screw on component a

Tools



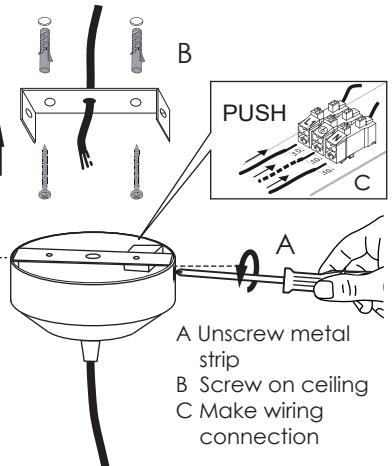
3 Adjust (3) stand extensions



4

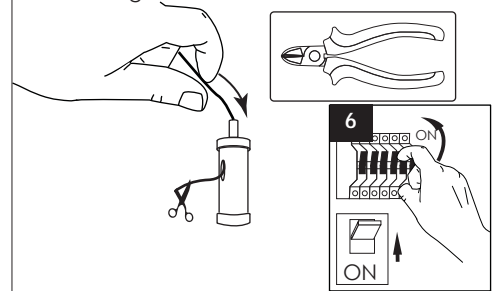
Installation

Attach the base on ceiling with screws



5

Pass the suspension cable through the stand extension



6

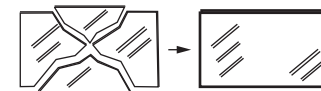
ON

USER INSTRUCTIONS

- The installation of the unit must be done by a qualified electrician.
- The unit must be earthed in case an earth connecting point exists.
- Ensure that the mains is switched off during servicing.
- Do not use bulb(s) bigger than the indicated on units name-plate or packaging.
- Ensure that after the installation, the unit is properly fixed and the cable clamps (if exist) are well tightened.
- Manufacturer will not accept liability for injury or damage resulting from incorrect use or installation
- The unit is not intended to operate in loop connection.
- Wall plugs and terminals are not included.
- LED modules are replaced only by the manufacturer.

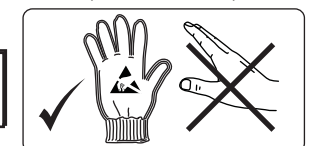
CAUTION

Replace any cracked shield.



CAUTION

Wear anti-static gloves before you touch LED systems.



BR//GHT
SPECIAL LIGHTING

Factory

5 Kefalovrisou Str., Monomati, Acharnai, P.O. Box 13677, Athens, Greece | Tel: (+30) 210 6208 230
E-mail: info@bright.gr | www.bright.gr

IP40



CE

