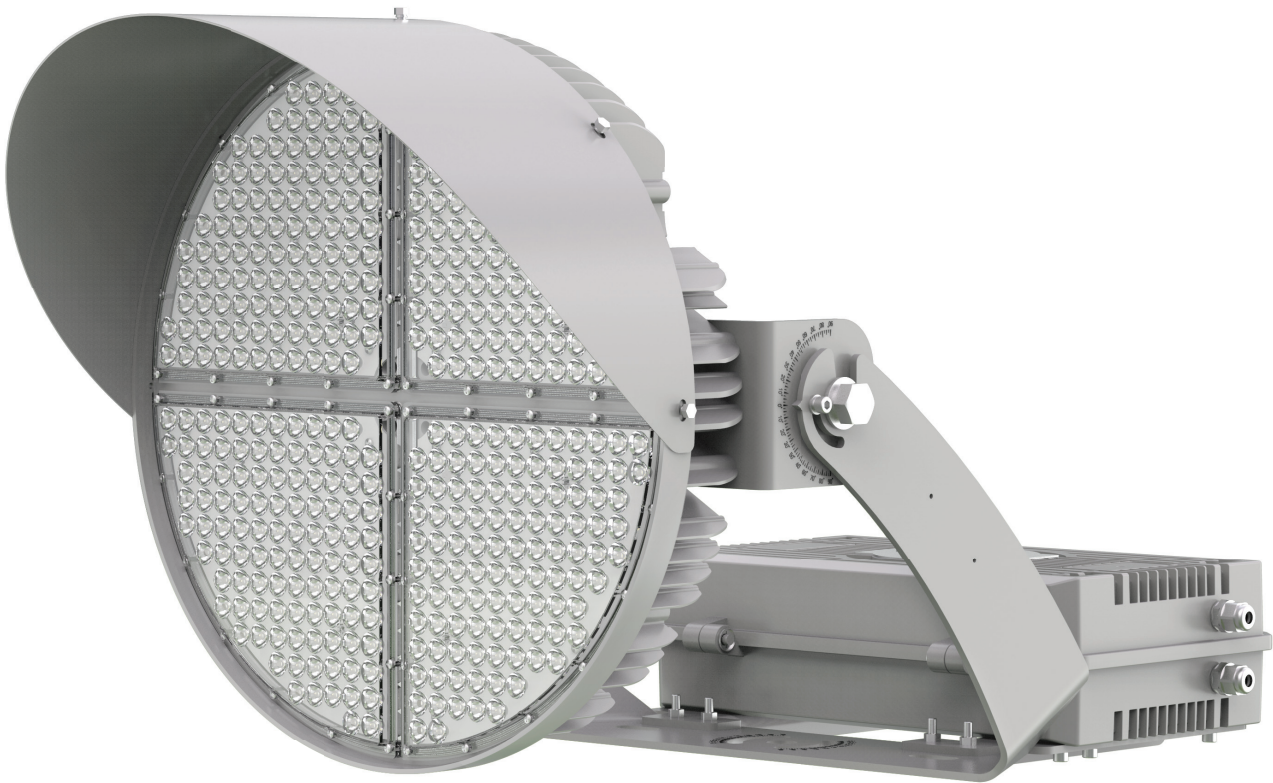


BR//GHT[®]
SPECIAL LIGHTING



SENEX SPORT

APPLICATIONS

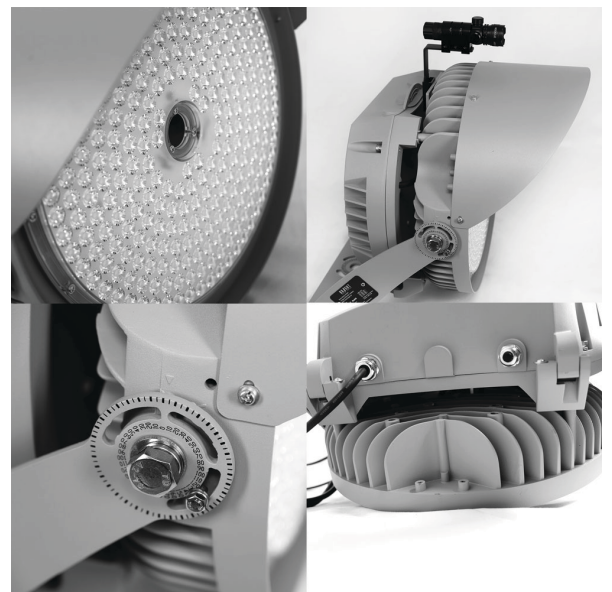
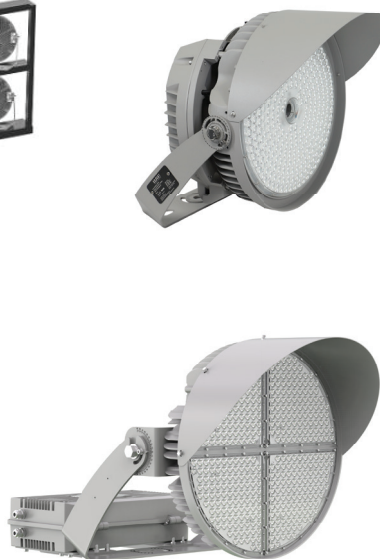
- Football court
- Basketball court
- Ski court
- Large area industrial
- Toll plazas
- Tennis court
- Golf court
- Truck stops
- Ports
- Airports



Product Description



- Advanced technology to get high efficacy and less glare optic performance
- A variety of light distribution from ultra-small to large angle, fit for different applications
- TCLI>90 for HD broadcast
- Flicker free capture ultra slow-motion
- Excellent wind resistance design
- Initial illuminance compensation, more energy saving
- The input voltage can be matched with 45V, 90V and 180V with different wiring modes
- Perfect event light control with a variety of intelligent control systems
- Super less weight with aviation aluminum
- Self-cleaning function with unique product structure design
- Power box removable for easy installation



TECHNICAL DETAILS

Specifications



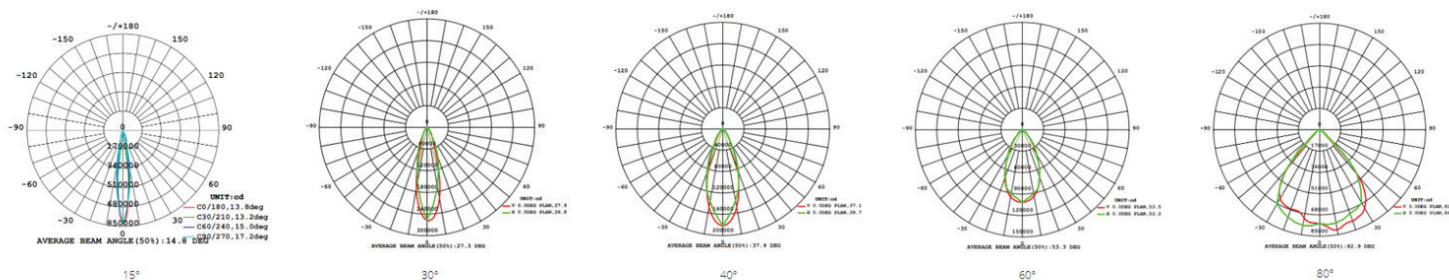
300W

Wattage	300W
Led Drive	Inventronic
Input Voltage	AC100-277V / 200-480V
Power Frequency	50 / 60Hz
Power Efficiency	0.93
Power Factor	≥0.9 at Max load
FF	<1%
Total Harmonic Distortion	<15%
Surge Protection	Line - Line 20 kV, Line - FG 20 kV
Control Method	0-10V / PWM / BLUETOOTH / DALI / DMX
Light Source	OSRAM / LUMILEDS
CCT	5700K (5000K / 4000K available)
Efficiency	150Lm/W - 135Lm/W
Luminous Flux	45.000Lm - 40.500Lm
CRI	70Ra - 80Ra - 90Ra Optional
Light Distribution	12°, 15°, 20°, 30°, 40°, 60°, 80°
Body	Die cast aluminum
Optic	Pc (Anti UV & Dust)
Cover(Optional)	Tempered Glass 3.2mm (Clear) Shatter Proof
Finish	Power Coating
IP	IP66
Operating Temperature	-30°C ~ 50°C
Weight (with driver and box)	13.53kg

400W

Wattage	400W
Led Drive	Inventronic
Input Voltage	AC100-277V / 200-480V
Power Frequency	50 / 60Hz
Power Efficiency	0.93
Power Factor	≥0.9 at Max load
FF	<1%
Total Harmonic Distortion	<15%
Surge Protection	Line - Line 20 kV, Line - FG 20 kV
Control Method	0-10V / PWM / BLUETOOTH / DALI / DMX
Light Source	OSRAM / LUMILEDS
CCT	5700K (5000K / 4000K available)
Efficiency	150Lm/W - 135Lm/W
Luminous Flux	60.000Lm - 54.000Lm
CRI	70Ra - 80Ra - 90Ra Optional
Light Distribution	12°, 15°, 20°, 30°, 40°, 60°, 80°
Body	Die cast aluminum
Optic	Pc (Anti UV & Dust)
Cover(Optional)	Tempered Glass 3.2mm (Clear) Shatter Proof
Finish	Power Coating
IP	IP66
Operating Temperature	-30°C ~ 50°C
Weight (with driver and box)	14.1kg

Photometric Data



TECHNICAL DETAILS

Specifications



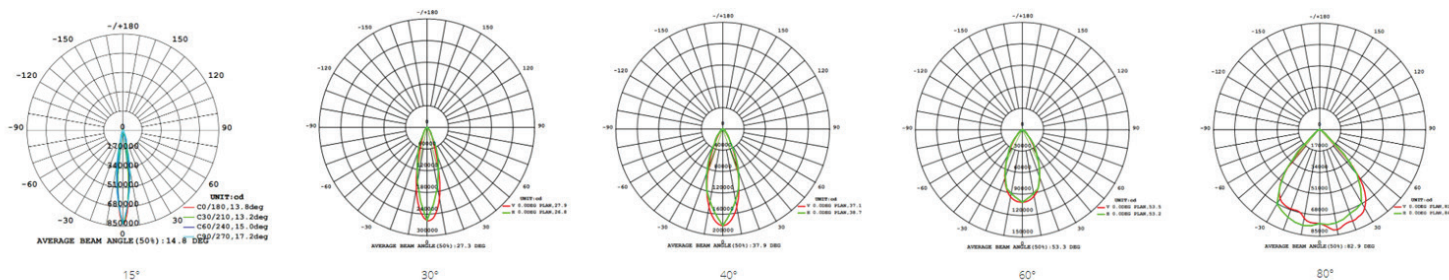
500W

Wattage	500W
Led Drive	Inventronic
Input Voltage	AC100-277V / 200-480V
Power Frequency	50 / 60Hz
Power Efficiency	0.93
Power Factor	≥0.9 at Max load
FF	<1%
Total Harmonic Distortion	<15%
Surge Protection	Line - Line 20 kV, Line - FG 20 kV
Control Method	0-10V / PWM / BLUETOOTH / DALI / DMX
Light Source	OSRAM / LUMILEDS
CCT	5700K (5000K / 4000K available)
Efficiency	160Lm/W - 144Lm/W
Luminous Flux	75.000Lm - 67.500Lm
CRI	70Ra - 80Ra - 90Ra Optional
Light Distribution	12°, 15°, 20°, 30°, 40°, 60°, 80°
Body	Die cast aluminum
Optic	Pc (Anti UV & Dust)
Cover(Optional)	Tempered Glass 3.2mm (Clear) Shatter Proof
Finish	Power Coating
IP	IP66
Operating Temperature	-30°C ~ 50°C
Weight (with driver and box)	14.1kg

600W

Wattage	600W
Led Drive	Inventronic
Input Voltage	AC100-277V / 200-480V
Power Frequency	50 / 60Hz
Power Efficiency	0.93
Power Factor	≥0.9 at Max load
FF	<1%
Total Harmonic Distortion	<15%
Surge Protection	Line - Line 20 kV, Line - FG 20 kV
Control Method	0-10V / PWM / BLUETOOTH / DALI / DMX
Light Source	OSRAM / LUMILEDS
CCT	5700K (5000K / 4000K available)
Efficiency	150Lm/W - 135Lm/W
Luminous Flux	90.000Lm - 81.000Lm
CRI	70Ra - 80Ra - 90Ra Optional
Light Distribution	12°, 15°, 20°, 30°, 40°, 60°, 80°
Body	Die cast aluminum
Optic	Pc (Anti UV & Dust)
Cover(Optional)	Tempered Glass 3.2mm (Clear) Shatter Proof
Finish	Power Coating
IP	IP66
Operating Temperature	-30°C ~ 50°C
Weight (with driver and box)	15.52kg

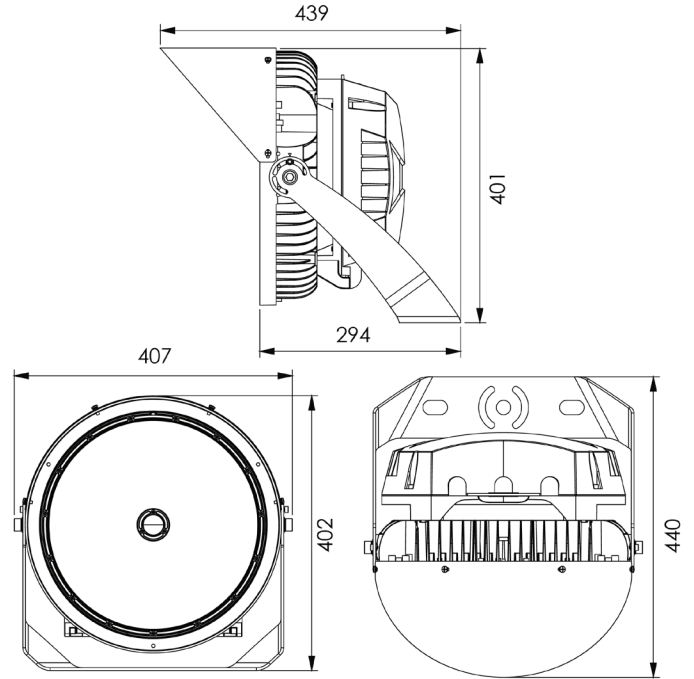
Photometric Data



TECHNICAL DETAILS

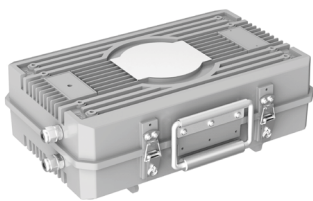
Product Dimensions

■ SENEX SPORT 300W 400W 500W 600W



Optional Installation

Removable driver box



With out driver box



Hook using as high bay



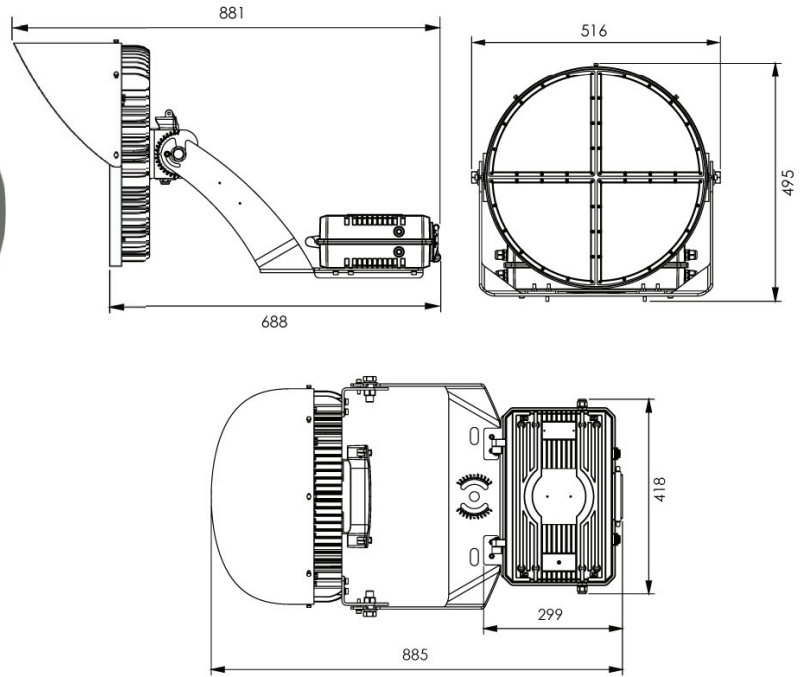
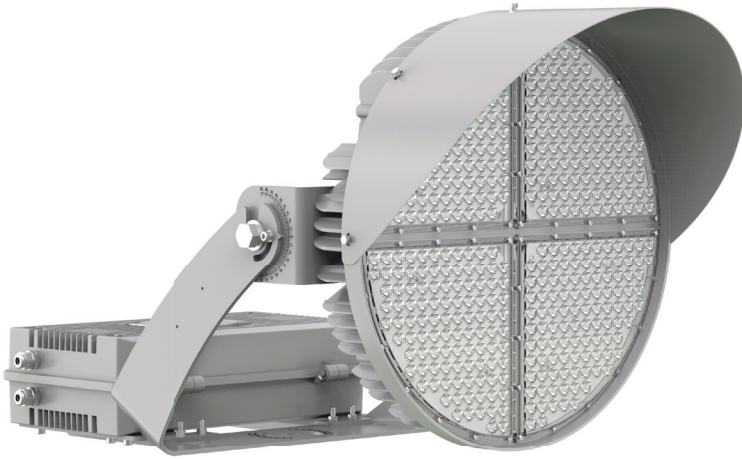
Arm



TECHNICAL DETAILS

Product Dimensions

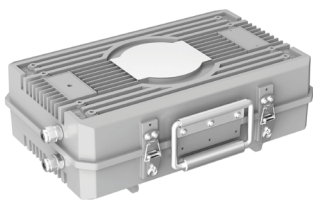
■ SENEX SPORT 750W 1000W 1200W



Optional Installation

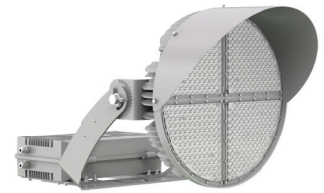
Removable driver box

With out driver box



TECHNICAL DETAILS

Specifications



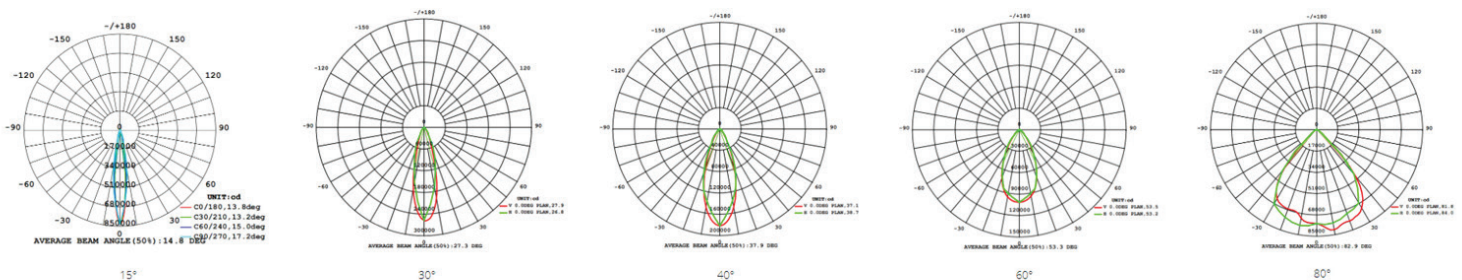
750W

Wattage	750W
Led Drive	Inventronic
Input Voltage	AC100-277V / 200-480V
Power Frequency	50 / 60Hz
Power Efficiency	0.93
Power Factor	≥0.9 at Max load
FF	<1%
Total Harmonic Distortion	<15%
Surge Protection	Line - Line 20 kV, Line - FG 20 kV
Control Method	0-10V / PWM / BLUETOOTH / DALI / DMX
Light Source	OSRAM / LUMILEDS
CCT	5700K (5000K / 4000K available)
Efficiency	135Lm/W - 122Lm/W
Luminous Flux	101.250Lm - 91.125Lm
CRI	70Ra - 80Ra - 90Ra Optional
Light Distribution	12°, 15°, 20°, 30°, 40°, 60°, 80°
Body	Cold forging aluminum
Optic	Pc (Anti UV & Dust)
Cover(Optional)	Tempered Glass 3.2mm (Clear) Shatter Proof
Finish	Electrophoresis
IP	IP66
Operating Temperature	-30°C ~ 50°C
Weight (with driver and box)	23.9kg

1000W

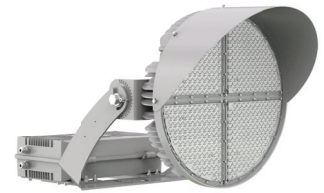
Wattage	1000W
Led Drive	Inventronic
Input Voltage	AC100-277V / 200-480V
Power Frequency	50 / 60Hz
Power Efficiency	0.93
Power Factor	≥0.9 at Max load
FF	<1%
Total Harmonic Distortion	<15%
Surge Protection	Line - Line 20 kV, Line - FG 20 kV
Control Method	0-10V / PWM / BLUETOOTH / DALI / DMX
Light Source	OSRAM / LUMILEDS
CCT	5700K (5000K / 4000K available)
Efficiency	135Lm/W - 122Lm/W
Luminous Flux	135.000Lm - 122.000Lm
CRI	70Ra - 80Ra - 90Ra Optional
Light Distribution	12°, 15°, 20°, 30°, 40°, 60°, 80°
Body	Cold forging aluminum
Optic	Pc (Anti UV & Dust)
Cover(Optional)	Tempered Glass 3.2mm (Clear) Shatter Proof
Finish	Electrophoresis
IP	IP66
Operating Temperature	-30°C ~ 50°C
Weight (with driver and box)	23.9kg

Photometric Data



TECHNICAL DETAILS

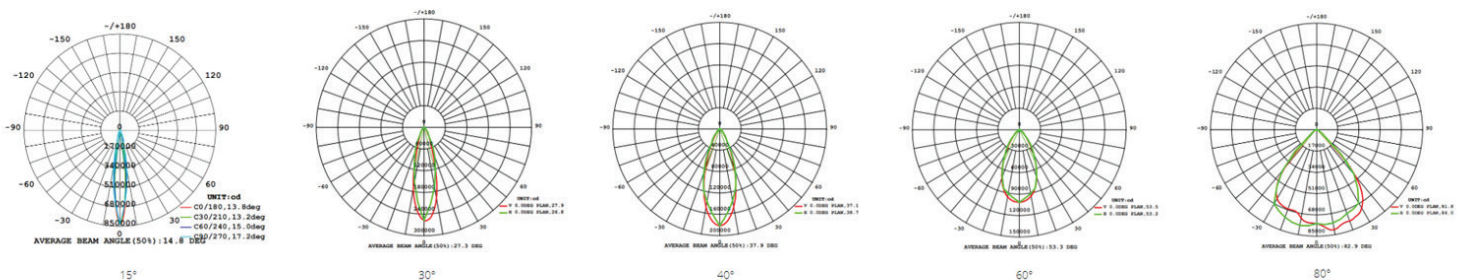
Specifications



1200W

Wattage	1200W
Led Drive	Inventronic
Input Voltage	AC100-277V / 200-480V
Power Frequency	50 / 60Hz
Power Efficiency	0.93
Power Factor	≥0.9 at Max load
FF	<1%
Total Harmonic Distortion	<15%
Surge Protection	Line - Line 20 kV, Line - FG 20 kV
Control Method	0-10V / PWM / BLUETOOTH / DALI / DMX
Light Source	OSRAM / LUMILEDS
CCT	5700K (5000K / 4000K available)
Efficiency	130Lm/W - 122Lm/W
Luminous Flux	156.000Lm - 140.400Lm
CRI	70Ra - 80Ra - 90Ra Optional
Light Distribution	12°, 15°, 20°, 30°, 40°, 60°, 80°
Body	Cold forging aluminum
Optic	Pc (Anti UV & Dust)
Cover(Optional)	Tempered Glass 3.2mm (Clear) Shatter Proof
Finish	Electrophoresis
IP	IP66
Operating Temperature	-30°C ~ 50°C
Weight (with driver and box)	26.74kg

Photometric Data



B R // G H T[®]

SPECIAL LIGHTING

Headoffice / Showroom: 13 S. Venizelou Avenue, Likovrisi, P.O. Box 14123, Athens, Greece

Tel: (+30) 210 28 51 304 Fax: (+30) 210 28 51 306

Showroom: 3 Alimou Avenue, Alimos, P.O. Box 17455, Athens, Greece

Tel: (+30) 210 98 83 722 Fax: (+30) 210 98 83 726

Showroom: 119 Kifisias Avenue, Marousi, P.O. Box 15125, Athens, Greece

Tel: (+30) 210 80 64 181 Fax: (+30) 210 80 64 194

Showroom: 6 Kazantzidi Avenue, Iraklio, P.O. Box 71601, Crete, Greece

Tel: (+30) 2810 210 480 Fax: (+30) 2810 210 482

Showroom: 101 E. Adistaseos Avenue, Kalamaria, P.O. Box 55134, Thessaloniki, Greece

Tel: (+30) 2310 48 18 48 Fax: (+30) 2310 48 18 28

Factory - Financial Services: 5 Kefalovrisou Street, Monomati, Acharnai, P.O. Box 13677, Athens, Greece

Tel: (+30) 210 62 08 230 Fax: (+30) 210 62 08 262

Quality Management Laboratory: 5 Kefalovrisou Street, Monomati, Acharnai, P.O. Box 13677, Athens, Greece

Tel: (+30) 210 62 08 230 Fax: (+30) 210 62 08 262

www.bright.gr | info@bright.gr