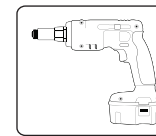
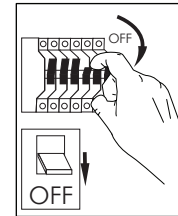
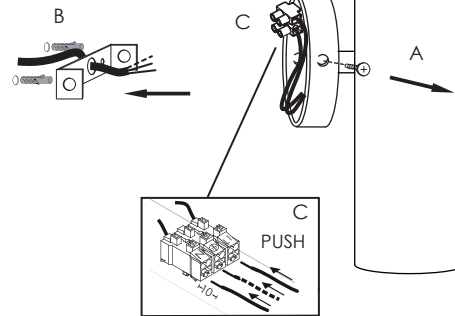
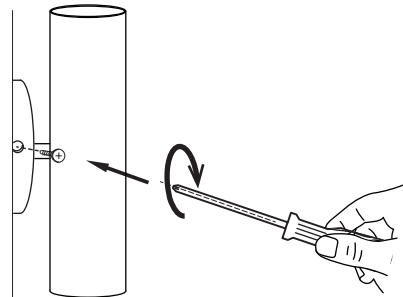


1 Installation

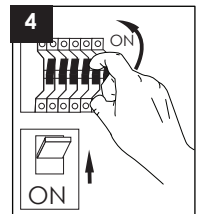
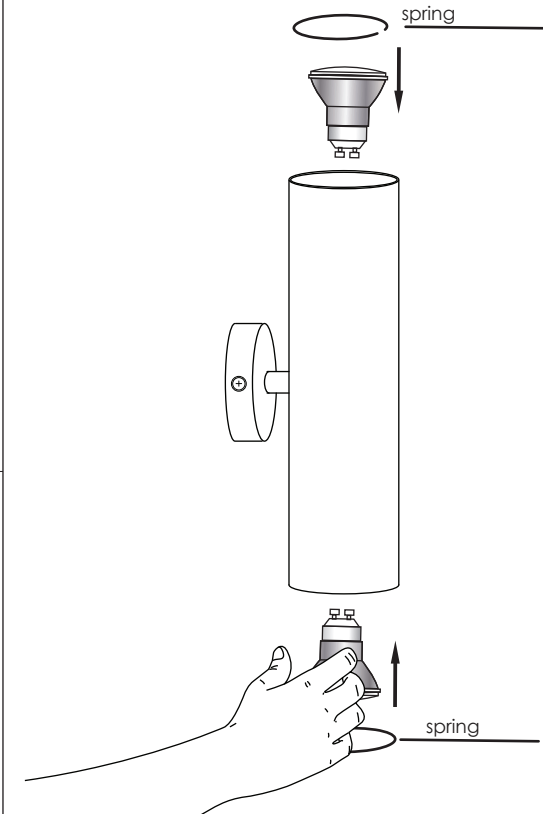
- Loosen the screws to remove the metal strip from the fixture.
- Screw the metal strip on the wall.
- Make wiring connection



2 Tighten the screws (2) to secure fixture on the wall



3 Insert/ replace lamp



USER INSTRUCTIONS

- The installation of the unit must be done by a qualified electrician.
- The unit must be earthed in case an earth connecting point exists.
- Ensure that the mains is switched off during servicing.
- Do not use bulb(s) bigger than the indicated on units name-plate or packaging.
- Ensure that after the installation, the unit is properly fixed and the cable clamps (if exist) are well tightened.
- Manufacturer will not accept liability for injury or damage resulting from incorrect use or installation.
- The unit is not intended to operate in loop connection.
- Wall plugs and terminals are not included.

CAUTION

Wear anti-static gloves before you touch LED systems

