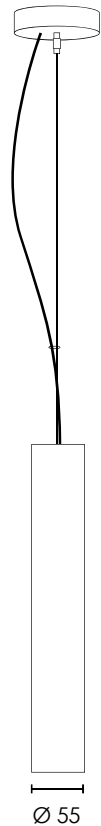


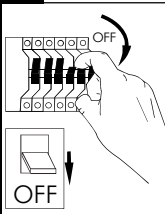
TORRIS SP COIN

installation instructions

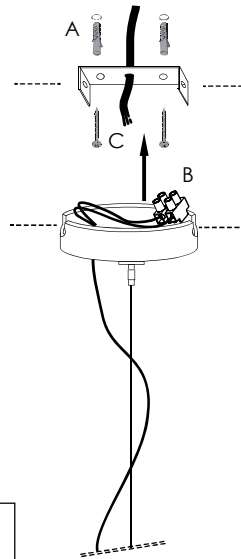
⊖ indoor/ suspended lights



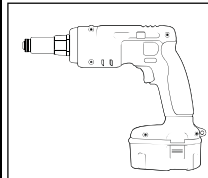
1 Installation



- A. Make holes on ceiling and adjust metal strip.
B. Make wiring connection.
C. Adjust base on ceiling.

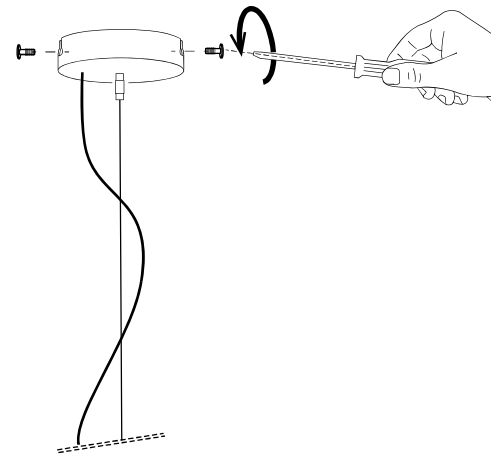


Tool

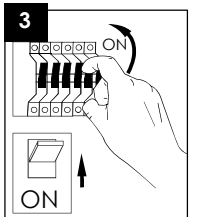
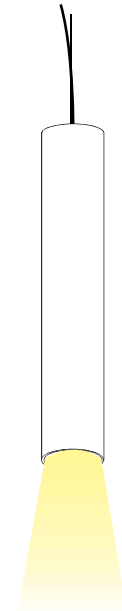
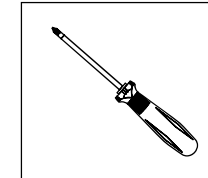


2

Tighten the screws (2) to secure base on ceiling.



Tool



USER INSTRUCTIONS

- The installation of the unit must be done by a qualified electrician.
- The unit must be earthed in case an earth connecting point exists.
- Ensure that the mains is switched off during servicing.
- Do not use bulb(s) bigger than the indicated on units name-plate or packaging.
- Ensure that after the installation, the unit is properly fixed and the cable clamps (if exist) are well tightened.
- Manufacturer will not accept liability for injury or damage resulting from incorrect use or installation
- The unit is not intended to operate in loop connection.
- Wall plugs and terminals are not included.
- LED modules are replaced only by the manufacturer.

BR//GHT
SPECIAL LIGHTING

Factory

5 Kefalovrisou Str., Monomati, Acharnai, P.O. Box 13677, Athens, Greece | Tel: (+30) 210 6208 230
E-mail: info@bright.gr | www.bright.gr

